



The Causeway House - Plot 13 at Wattstown Manor

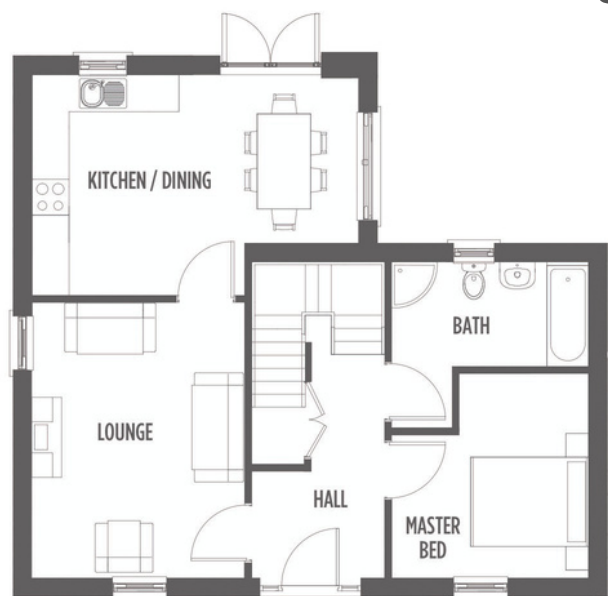


Braidwater
HOMES



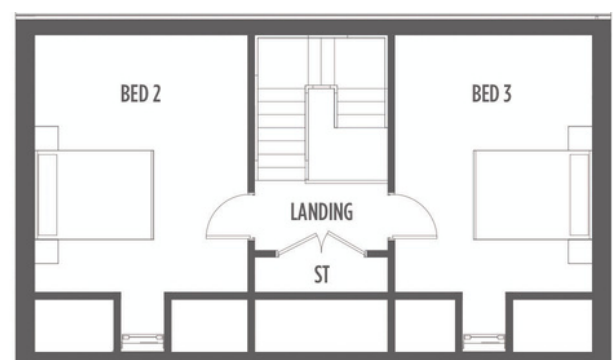
The Causeway layout & key attributes

The Causeway house at Wattstown Manor is perfect for modern family or retirement living. A substantial three bed home with open spacious kitchen/dining area, lounge, downstairs bathroom, landscaped garden space, tarmac to driveway with cobble edging and much more.



GROUND FLOOR

GROUND FLOOR	
Lounge (max)	4.65m x 3.60m
Kitchen, Dining, Family (max)	3.50m x 5.40m
Bathroom (max)	2.80m x 3.30m
Master Bedroom (max)	3.45m x 3.30m



FIRST FLOOR

FIRST FLOOR	
Bedroom 2 (max)	4.00m x 3.60m
Bedroom 3 (max)	4.00m x 3.30m

To follow, are actual images of similar house type interiors in Braidwater developments with virtual furniture added in for context.

* all images are for illustration only *



Relaxation

Kitchen:



Lounge:



* image is for illustration only *



Master bedroom:



Bedroom 2:



* all images are for illustration only *

A Sanctuary of Space

The Rear Garden:



* all images are for illustration only *

Braidwater Developments



Beech Hill View:



Gleann Elagh





Book an appointment for our
new viewing home

Selling Agent:

Speak to Bensons for more information,
availability and an appointment to view:

02870 343677

