



The Fuchsia

Spacious Family Living in Roe Wood



Braidwater

HOMES

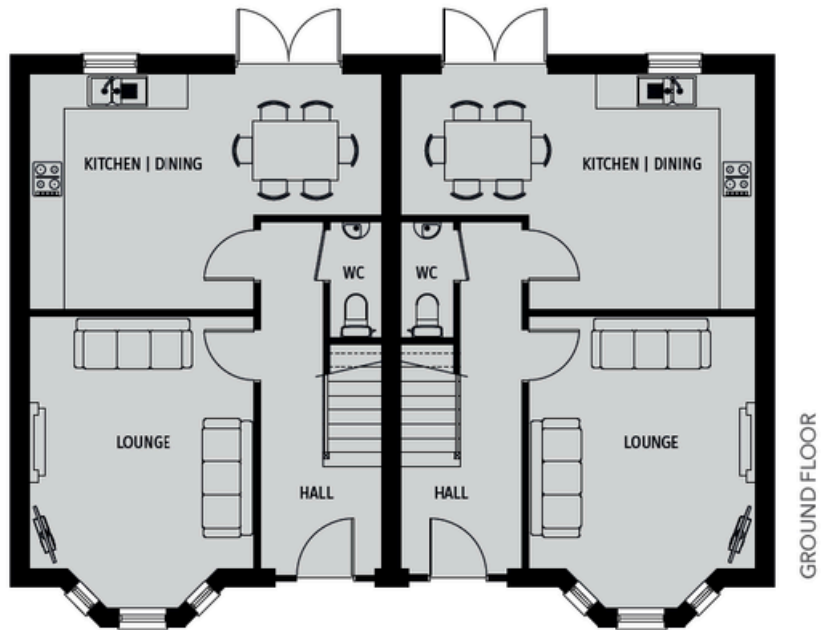
The Fuchsia house

The Fuchsia, a three bedroom semi detached home with ample family space, a bathroom, ensuite and a full turnkey finish.

The Fuchsia

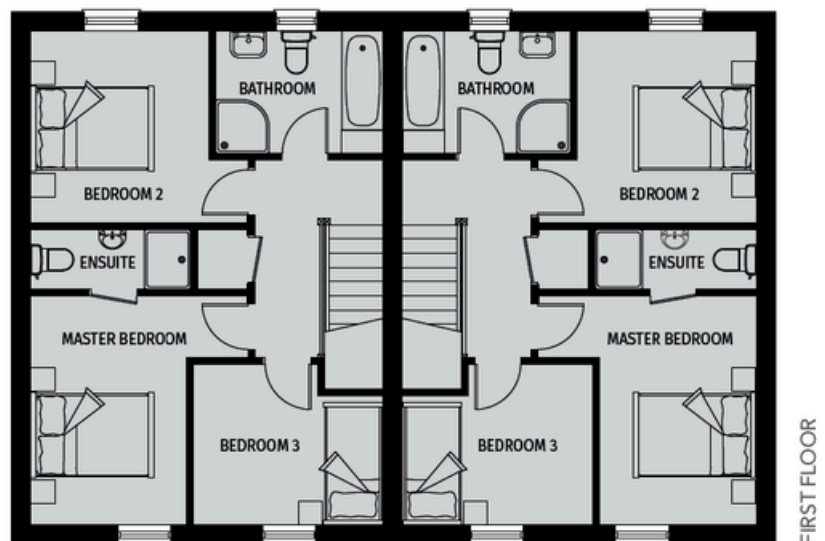
GROUND FLOOR

Lounge (max)	4.90m x 3.80m
Kitchen/ Dining/ Family (max)	4.00m x 6.00m
WC	1.95m x 0.85m



FIRST FLOOR

Master bedroom (max)	3.90m x 3.70m
Ensuite	1.00m x 2.75m
Bedroom 2 (max)	3.25m x 3.70m
Bedroom 3 (max)	2.75m x 3.20m
Bathroom	2.10m x 2.85m



To follow, are sample images of a finished Fuchsia house with virtual furniture added in for context.

* all images are for illustration only & contain virtual furniture *



Kitchen:



Living room:





Work-Life Balance

Master bedroom:



Bathroom:



The Simple Pleasures

Bedroom 2:



Bedroom 3:





Take Our Tour

click on the link for our Fuchsia 3D walkthrough tour:

CLICK HERE

Selling Agent:

Speak to Bensons Estate Agents
for more information and availability:

028 7034 3677

