



an existing Belvedere
in Cloughan View

The Belvedere

4 bedroom detached chalet bungalow
at Cloughan View



Braidwater
HOMES

The Belvedere house

The Belvedere, a four bedroom chalet bungalow with ample family space, a bathroom, ensuite and a full turnkey finish.

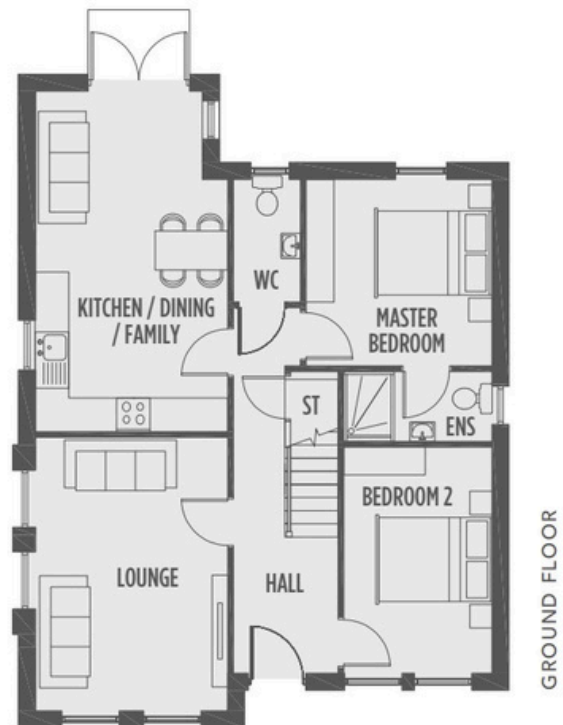
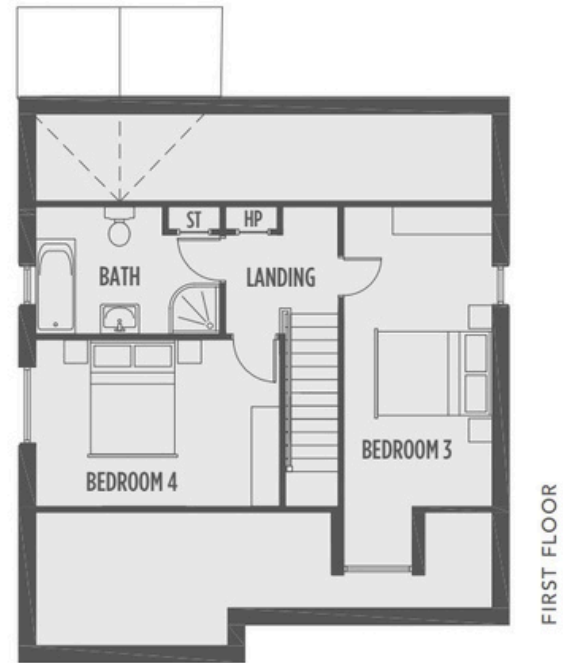
The Belvedere

GROUND FLOOR

Lounge	4.90m x 3.45m
Kitchen Dining Family	6.55m x 3.45m (max inc snug)
WC	2.20m x 1.20m
Master Bedroom	3.35m x 3.30m
Ensuite	1.25m x 2.55m
Bedroom 2	4.05m x 2.55m

FIRST FLOOR

Bedroom 3	6.90m x 2.60m (max)
Bedroom 4	3.30m to 4.40m
Bathroom	2.60m x 3.35m(max)



To follow, are sample images of a finished Belvedere house with virtual furniture added in for context.

* all images are for illustration only *



Family Time

Kitchen:



* all images are for illustration only *

Living room:





Work-Life Balance

Master bedroom:



Downstairs bedroom or office/study:



The Simple Pleasures

Bedroom 2:



Bedroom 3:



A Sanctuary Space

The Rear Garden:



External finish:





Take Our Tour

click on the link for our Belvedere 3D walkthrough tour:

[The Belvedere 3D walkthrough](#)

Selling Agent:

Speak to Simon Brien
for more information and availability:

028 90668888

SimonBrien
NEW HOMES